



## In This Issue:

**BERARD**  
SINCE 1945  
The Mega Transport Experts

- > Moving History | 6,200 Ton SSSB Project
- > The Shipyard | Ferry Boat Load Out
- > Team Member Spotlight | Karl Vann



# Moving History 6,200 Ton SSSB Project

## Job Specs

**Weight:** 6,200 Tons

**Dimensions:**

268'L x 68'W x 110'H


**Equipment Used:**

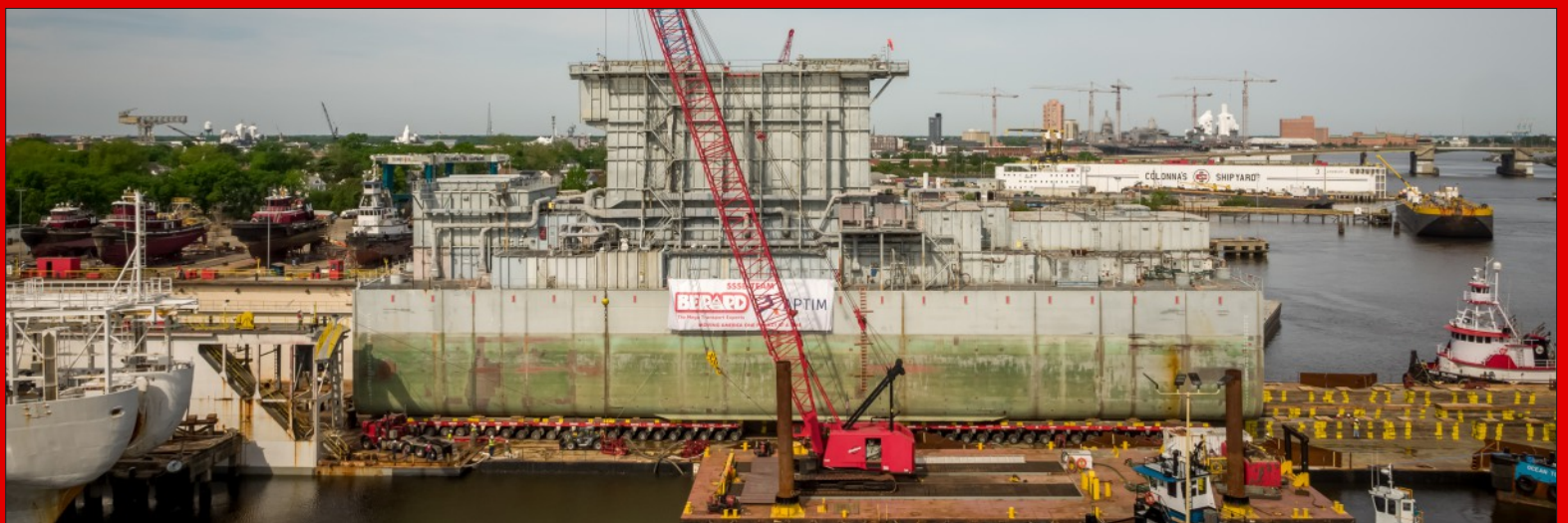
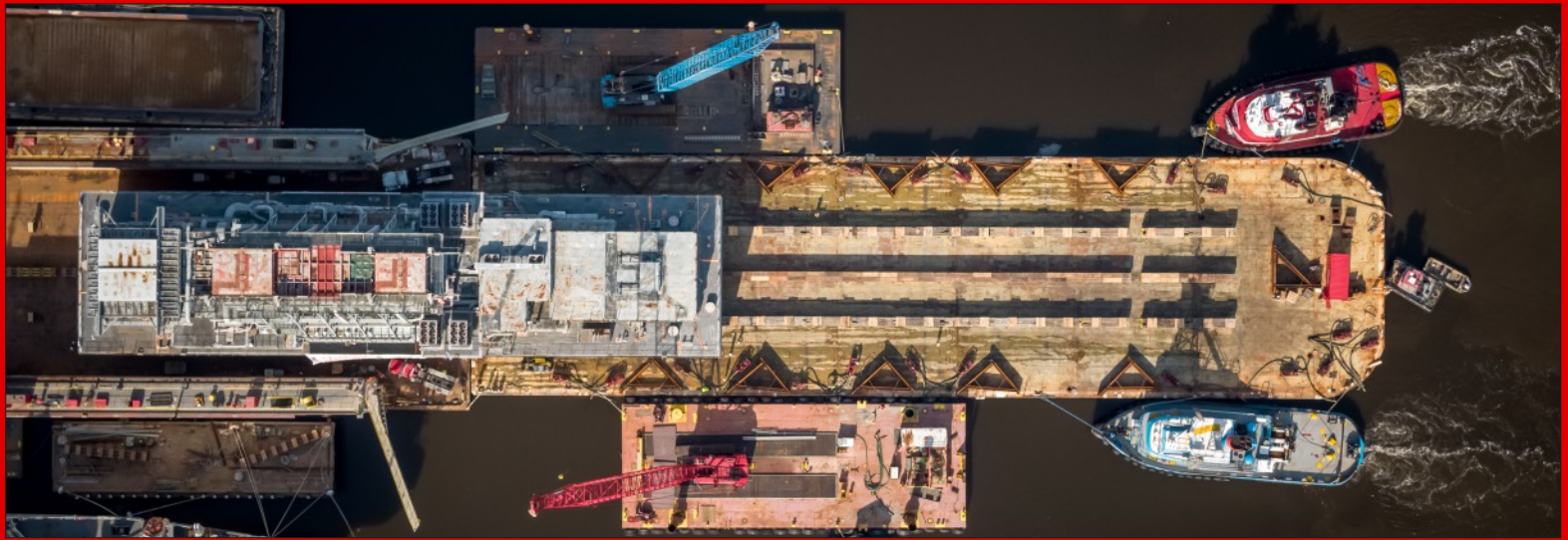
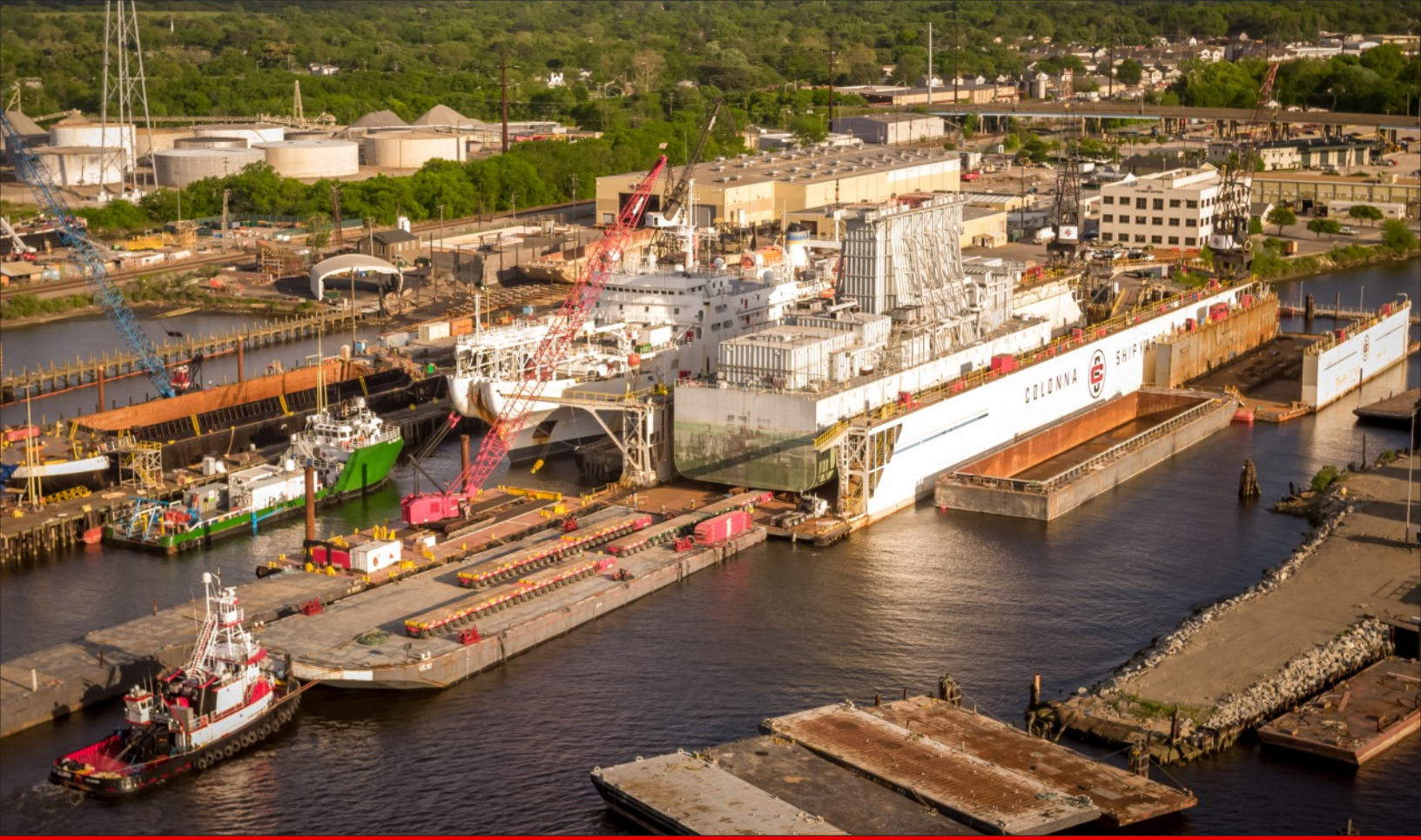
192 axle lines of SPMTs, 8 power packs, loading ramps, high volume water pumps, 400' x 105' deck barge, crane mats and winch trucks

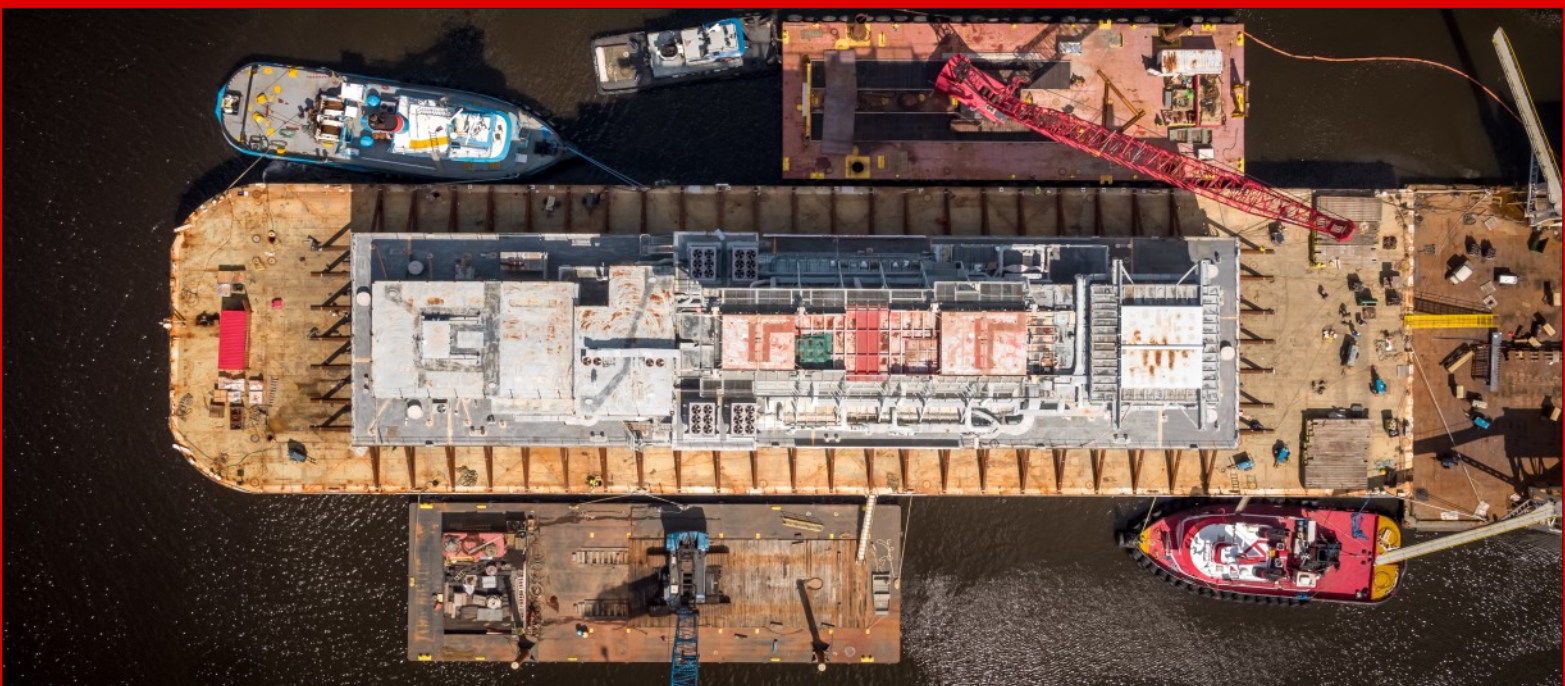
The Berard Team was recently commissioned to move a piece of naval history. The SSSB (surface ship support barge), built in the WW2 era, needed to be delivered from Norfolk, VA, to Mobile, AL. The barge served as a nuclear fuel support barge servicing nuclear ships in the US Naval fleet at the time. Berard engineering and project management teams worked diligently to plan and execute the multi-faceted transport process which first involved wet towing the SSSB from its mooring location at Newport News Shipyard to Colonnas Shipyard for float onto a dry dock.

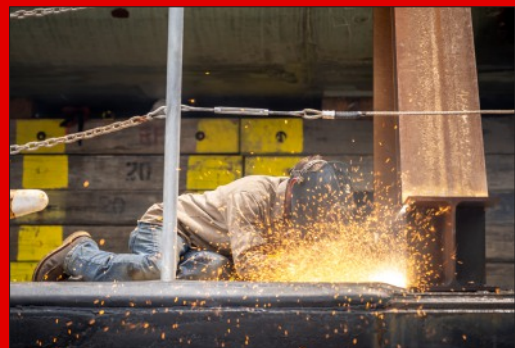
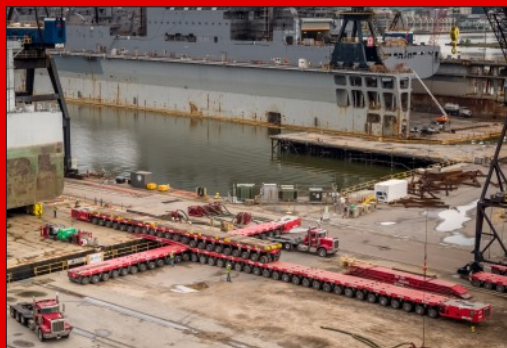
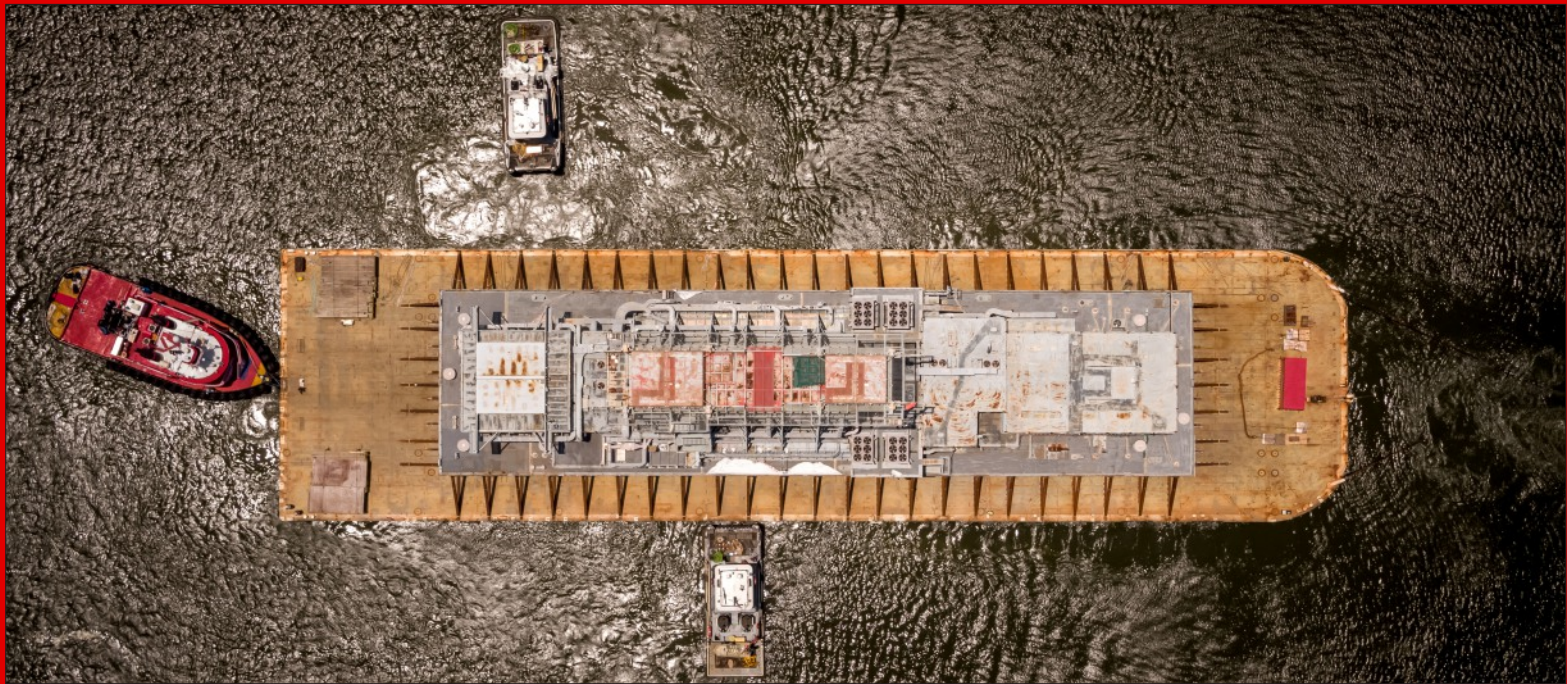
Once the barge was raised on the dry dock, 192 axle lines of SPMTs were positioned underneath for trans-loading onto a 400' x 105' deck barge. Once in position on the deck barge, sea fastening crews went to work installing an array of steel beam stanchions for the 1,635 nautical mile water transit to Alabama. Once the SSSB reached Mobile, the team went to work preparing for the offload procedure. With the sea fastening removed, the team could begin to offload the SSSB onto the shipyard facility. The 6,200 ton cargo was slowly moved to its final resting place, bringing its long and laborious journey to an end. Our team went above and beyond on this project to make it a great one, and we thank everyone involved in this awesome and historical project. Well done team!

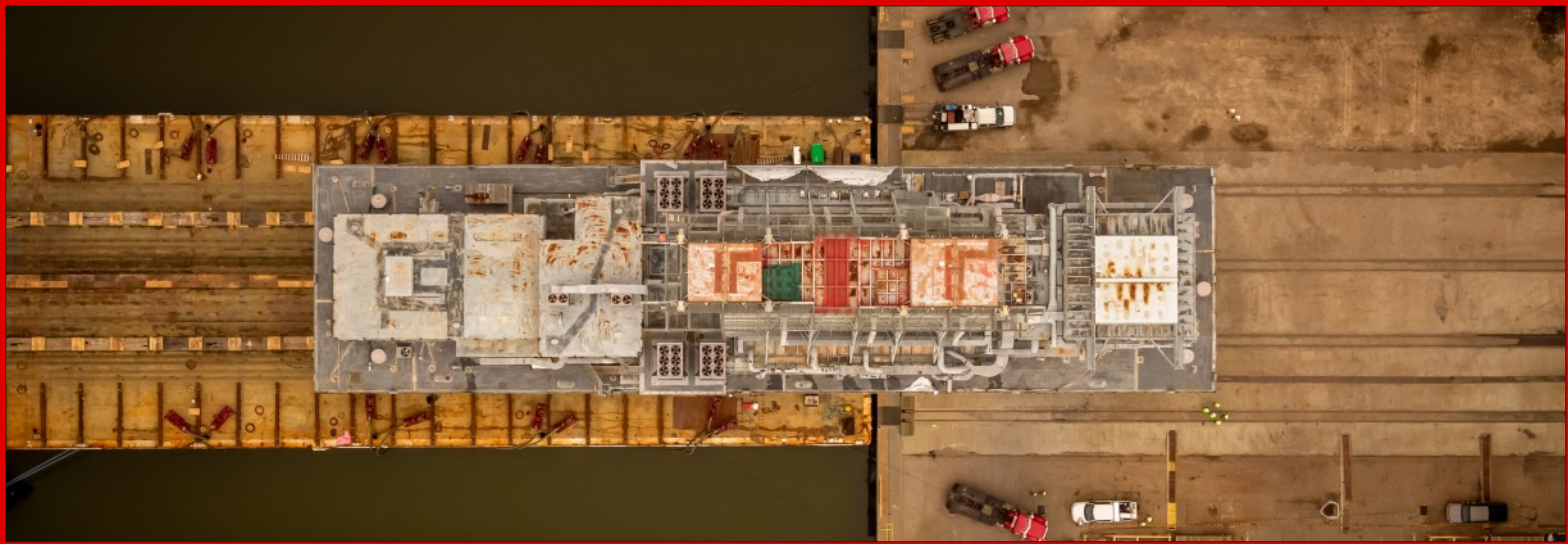
Berard COO Braedon Berard commented, "This was a very complex project that involved countless hours of strategic planning. I could not be more proud of everyone's involvement from start to finish. With every challenge that arose our team tackled them head on and worked together to make sure that every detail was taken care of. Throughout this project we worked alongside and had support from many of our existing vendors and also formed new relationships along the way, and look forward to being involved on future projects together. It was an honor to be awarded this project and our future is bright and we are looking forward to the next big challenge!"













# The Shipyard Ferry Boat Load Out



## Job Specs

**Weight:**  
380 Tons

**Dimensions:**  
154'L x 34'W

**Equipment Used:**  
20 axle lines of SPMTs, 2 power packs, barge ramps and winch trucks

Berard recently loaded out a ferry vessel for a major shipyard in South Louisiana. The team loaded the vessel onto 20 axle lines of SPMTs and transported it from the fabrication shop to the client's dry dock. Severe rains in the area caused minor delays to the transport but our team pressed forward to keep the shipyard's build schedule on track. The 380 ton ferry was successfully loaded onto the dry dock where shipyard personnel would later launch and continue the final construction phases. Berard has helped many shipyards stay on schedule, contact our sales team to learn how we can help your shipyard today.





> Team Member Spotlight

# Karl Vann

## Technician



Karl Vann joined the Berard team in June of 2018 as a technician in our maintenance department. He helps keep all of Berard's equipment assets running in top shape.

"I like a lot of things about Berard. The one thing that I like the most is that I am part of a company that moves just about anything, no matter what size it is or industry it's for. I like working at Berard very much. It is the nicest facility I have worked at. Also everyone has treated me so well" said Karl

Karl has been married to his wife Christine for over 29 years and they have two children, Bryce and Harley. He enjoys camping with the family and customizing and riding old motorcycles.



> Birthdays @ Berard

# Happy Birthday!

**Happy Birthday to These Dedicated Team Members!**

Brett Berard  
Robin Berard  
Tony Broussard  
† Trey Chapman

Wendy Hebert  
Chris Louviere  
Mark Pelous  
Jacob Vollmer